

Container Inspection...

7-Point Container Inspection Process:

1. Outside/ Undercarriage (before entering facility)
2. Inside/ Outside doors
3. Right side
4. Left Side
5. Front Wall
6. Ceiling/Roof
7. Floor (Inside)



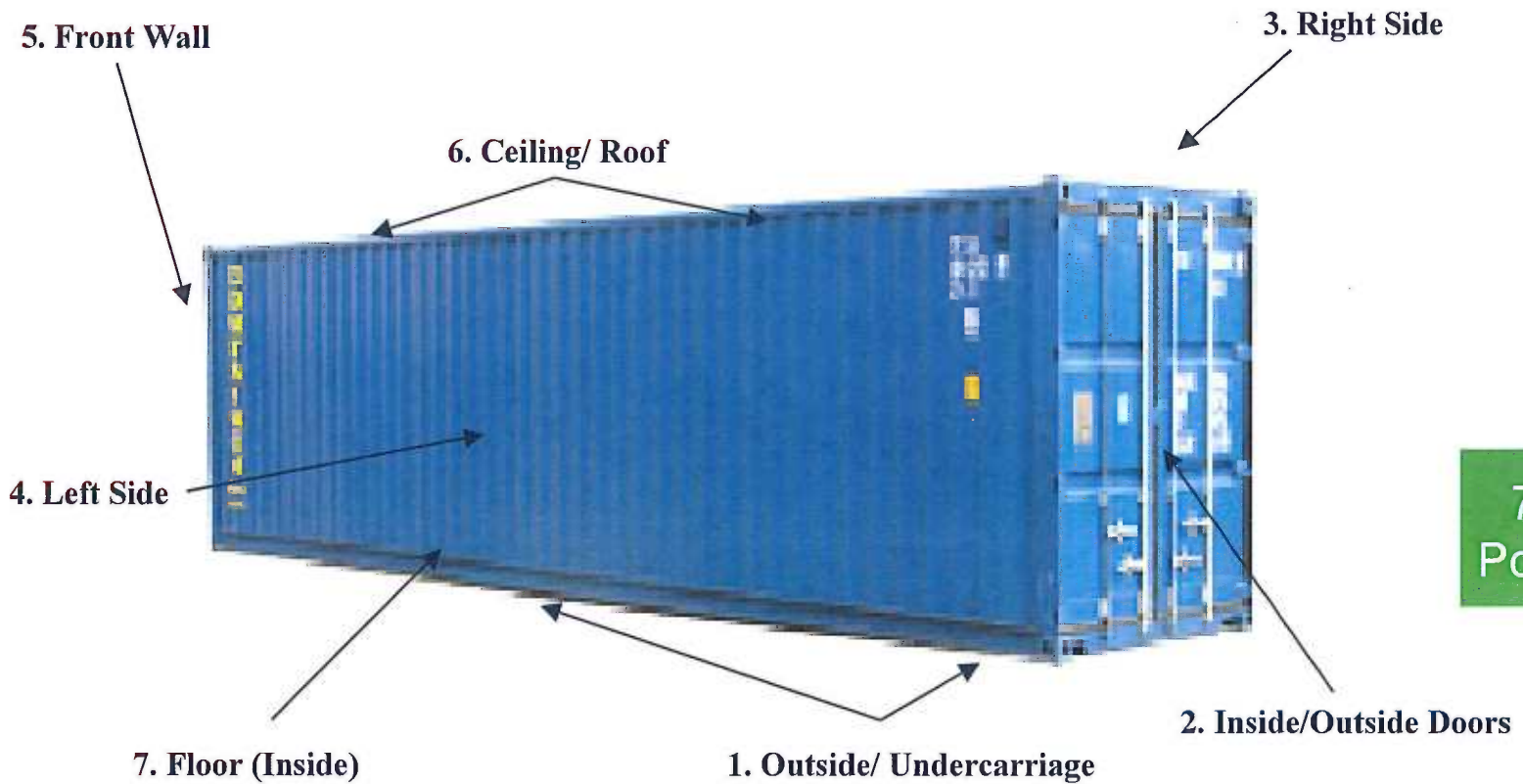
7
Point



Supply Chain Security in a New Business Environment



7-Point Container Inspection



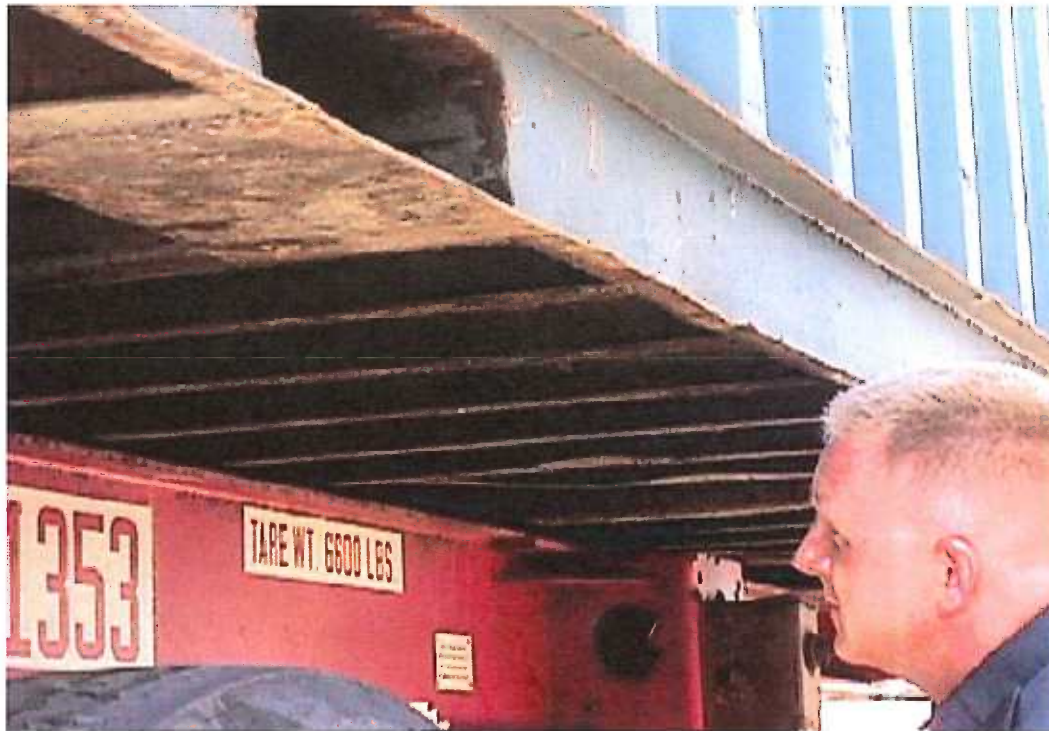
Supply Chain Security in a New Business Environment



7-Point Container Inspection...

1. Undercarriage:

- Inspect prior to entering facility
- Support beams should be visible



7
Point
Under

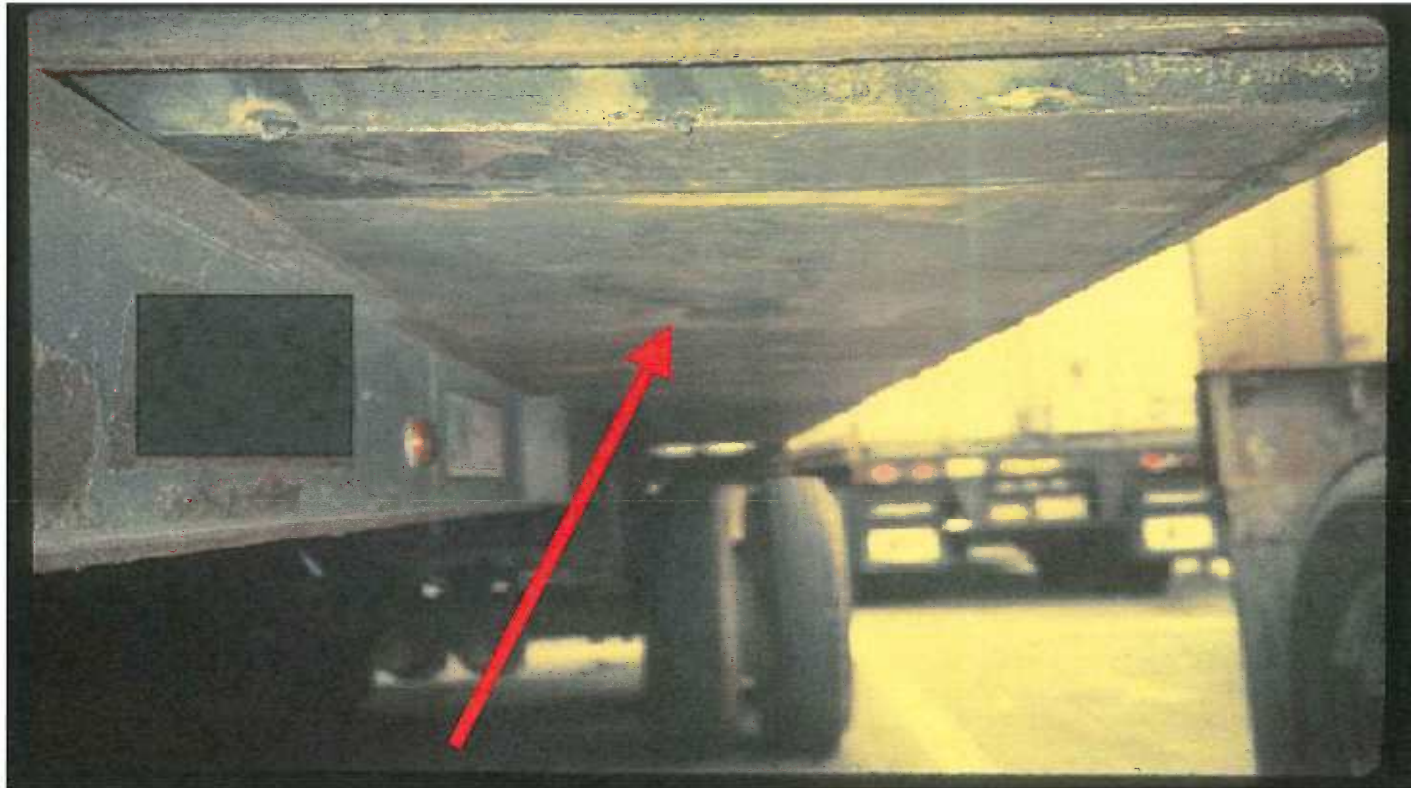


Supply Chain Security in a New Business Environment



7-Point Container Inspection...

1. Undercarriage:



7
Point
Under

Solid plate/ Support beams not visible.



Supply Chain Security in a New Business Environment



7-Point Container Inspection...

1. Undercarriage:



7
Point
Under

432 lbs. of cocaine!



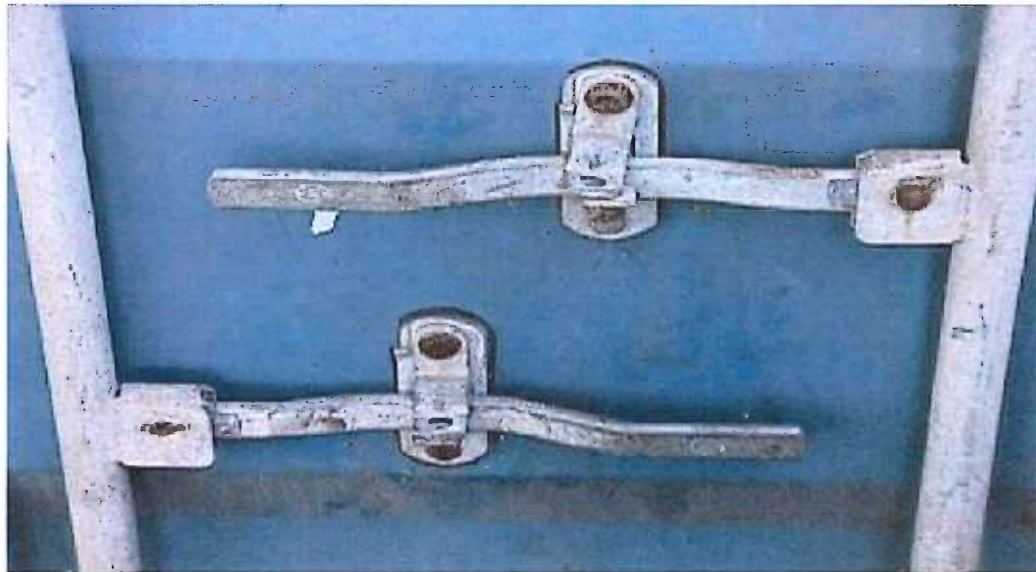
Supply Chain Security in a New Business Environment



7-Point Container Inspection...

2. Outside/Inside Doors:

- **Secure and reliable locking mechanisms**
- **Look for different color bonding material**
- **Loose Bolts**
- **Plates and repairs**



7
Point
Doors

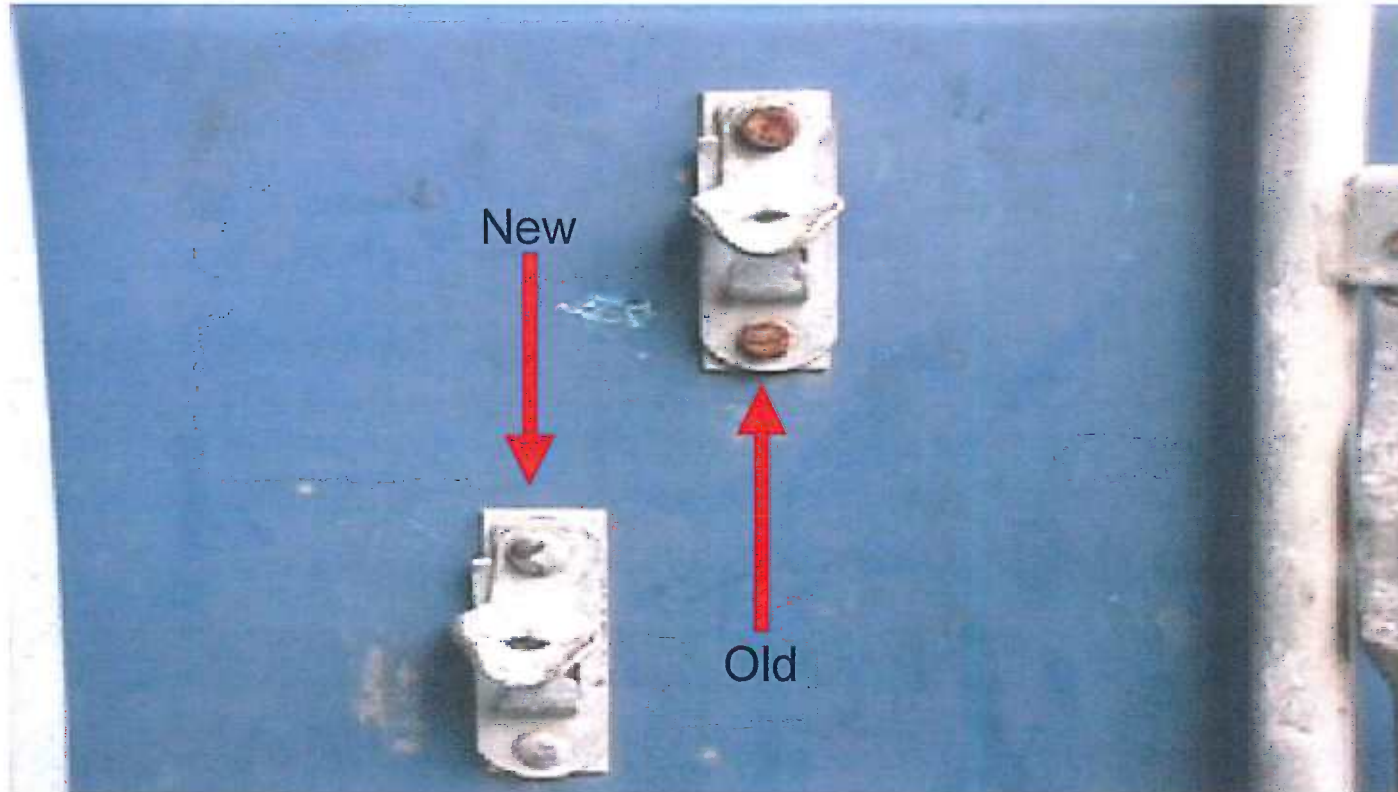


Supply Chain Security in a New Business Environment



7-Point Container Inspection...

2. Outside Doors:



7
Point
Doors

Rivet type & color/ New & old rivets together.

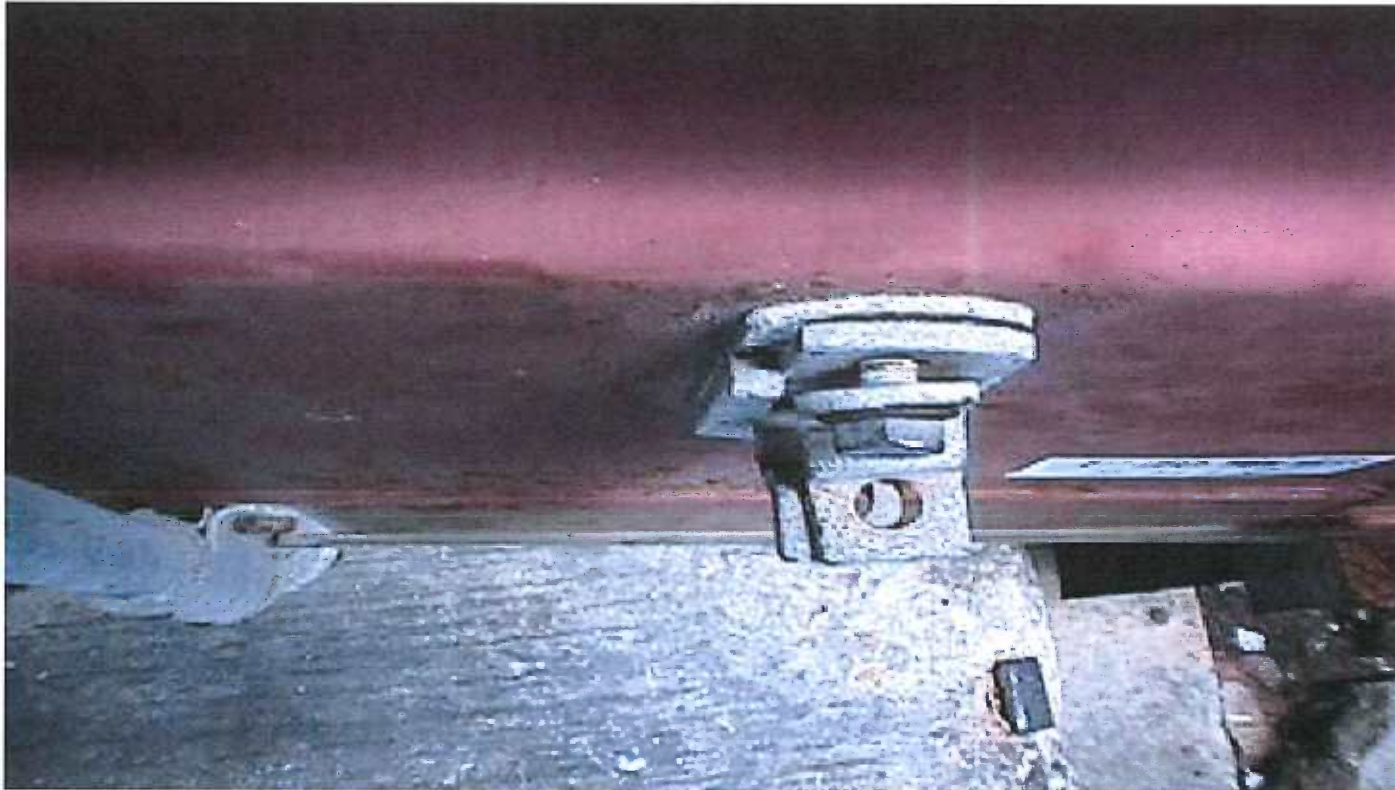


Supply Chain Security in a New Business Environment



7-Point Container Inspection...

2. Outside Doors:



7
Point
Doors

Detachable or loose bolts can allow access inside container.



Supply Chain Security in a New Business Environment



7-Point Container Inspection...

2. Inside Doors:



7
Point
Doors

Chemicals are used to make bolts look old and rusty.



Supply Chain Security in a New Business Environment



7-Point Container Inspection...

2. Inside Doors:



7
Point
Doors

Non-factory putty keeps bolts in place.



Supply Chain Security in a New Business Environment



7-Point Container Inspection...

2. Inside Doors:



7
Point
Doors

Solid plates should not cover standard container cavities.



Supply Chain Security in a New Business Environment



7-Point Container Inspection...

2. Inside Doors:



7
Point
Doors

Container cavities. Five container shipment/ 837 lbs. of cocaine.



Supply Chain Security in a New Business Environment

7-Point Container Inspection...

3 & 4. Right/Left Sides:

- Unusual repairs to structural beams.
- Repairs to the walls on the inside of the container must be visible on the outside.
- Use tool to tap side walls. Listen & feel for hollow sound!



7
Point
Sides



Supply Chain Security in a New Business Environment



7-Point Container Inspection...

3 & 4. Right/Left Sides:



7
Point
Sides

17 Container Shipment/ 1,275 lbs. of cocaine



Supply Chain Security in a New Business Environment

7-Point Container Inspection...

3 & 4. Right/Left Sides:



7
Point
Sides

55 lbs. of cocaine/ One beam!



Supply Chain Security in a New Business Environment



7-Point Container Inspection...

5. Front wall:

- Blocks and vents are visible.
- Use tool to tap front wall. Listen and feel for hollow sound!
- Range finder, measuring tape and/or string can be utilized to determine the length of container.



7
Point
Wall

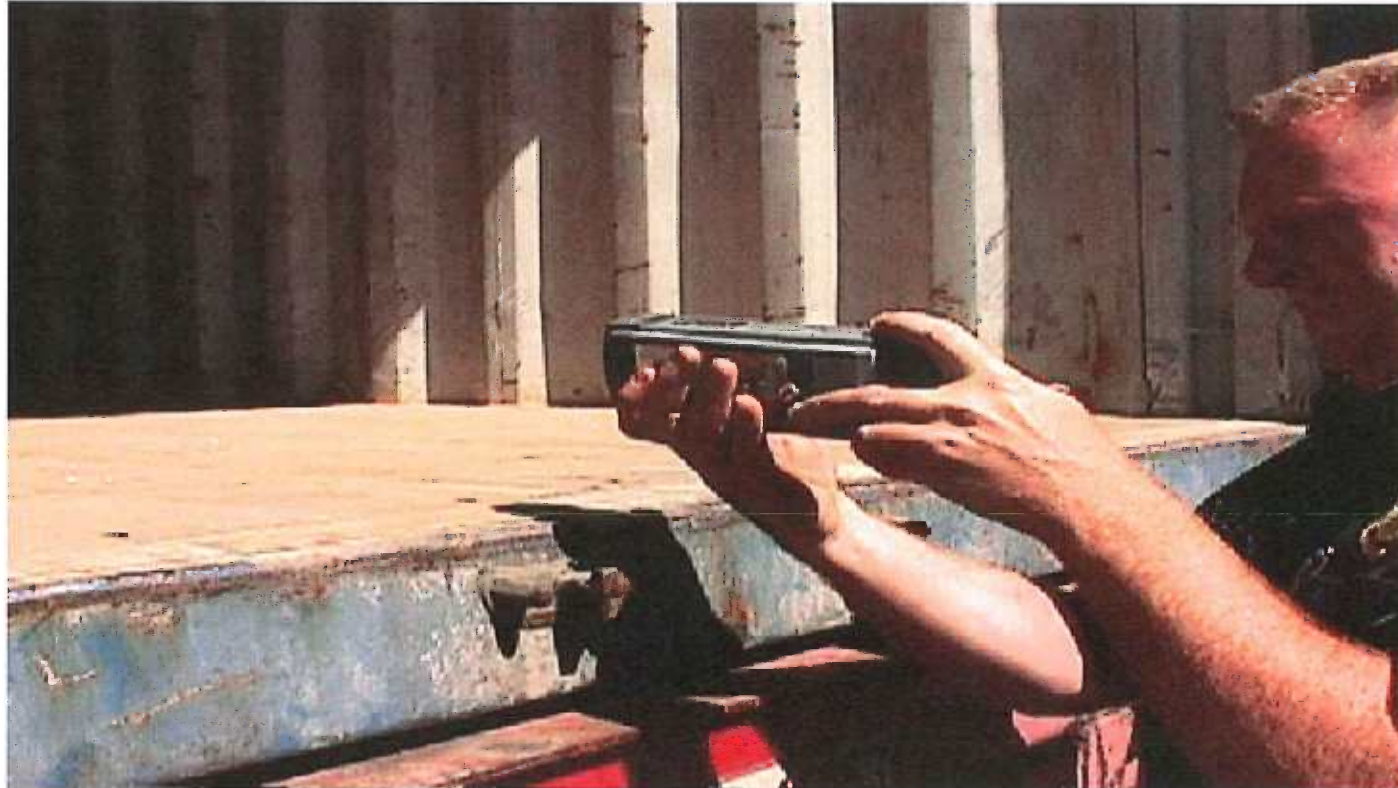


Supply Chain Security in a New Business Environment



7-Point Container Inspection...

5. Front wall:



7
Point
Wall

Use laser range finder from door opening.



Supply Chain Security in a New Business Environment



7-Point Container Inspection...

5. Front wall:



7
Point
Wall

Normal block and air vent



Supply Chain Security in a New Business Environment



7-Point Container Inspection...

5. Front wall:



7
Point
Wall

Short distance between block and vent. Wall colors are different!



Supply Chain Security in a New Business Environment



7-Point Container Inspection...

5. Front wall:



7
Point
Wall

Fake block made out of cardboard!



Supply Chain Security in a New Business Environment



7-Point Container Inspection...

5. Front wall:



7
Point
Wall

Real block concealed behind false wall.



Supply Chain Security in a New Business Environment



7-Point Container Inspection...

5. Front wall:



7
Point
Wall

1,290 lbs. Marijuana. Range finder used.



Supply Chain Security in a New Business Environment



7-Point Container Inspection...

6. Ceiling/ Roof:

- Ceiling is a certain height from floor. Blocks & vents are visible.
- Uncomfortable feeling inside container.
- Repairs to the ceiling on the inside of the container should be visible on the outside.
- Use tool to tap ceiling. Listen for hollow sound.



7
Point
Ceiling



Supply Chain Security in a New Business Environment



7-Point Container Inspection...

6. Ceiling/ Roof:



7
Point
Ceiling

One row of vent holes visible.



Supply Chain Security in a New Business Environment



7-Point Container Inspection...

6. Ceiling/ Roof:



7
Point
Ceiling

Blocks are not visible.



Supply Chain Security in a New Business Environment



7-Point Container Inspection...

6. Ceiling/ Roof:



7
Point
Ceiling

1,200 lbs. of cocaine!



Supply Chain Security in a New Business Environment



7-Point Container Inspection...

7. Floor:

- Floor should be a certain height from the ceiling
- Floor should be flat. Do not need to step up to get inside!
- Different floor heights
- Unusual repairs



7
Point
Floor



Supply Chain Security in a New Business Environment



7-Point Container Inspection...

7. Floor:



7
Point
Floor

Step up to get inside! Why?



Supply Chain Security in a New Business Environment



7-Point Container Inspection...

7. Floor:



7
Point
Floor

Sloppy repairs and welding.



Supply Chain Security in a New Business Environment



7-Point Container Inspection...

7. Floor:



7
Point
Floor

Welded steel plates/1,300 lbs. of cocaine underneath the plates!



Supply Chain Security in a New Business Environment



7-Point Container Inspection...

7. Floor:



7
Point
Floor

False compartment/ 550 lbs. of cocaine within compartment!



Supply Chain Security in a New Business Environment

